



'An Obsessive attention to detail.'
The New York Times

'Effortlessly Cool.'
Living Etc.

'One of the Worlds leading style makers.'
Taschen.

'You can feel the love.'
The Telegraph

'Superb complex peices of furniture.'
Boat International.

'Absolutely Incredible'.
Netflix - Amazing Interiors.

John Teall and Andrea Fenner
of Flux Interiors



John Teall is a British designer known for his unique and ground breaking work in interiors and furniture design. He set up his firm Flux Interiors in 2005.

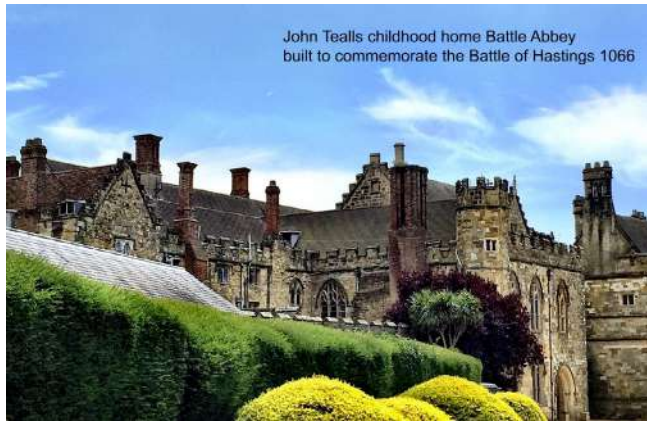
He describes his style as English Eclectic. A style firmly rooted and respecting tradition and history but with wild and far reaching branches that explore and harmoniously curate from everything and anything else he can find. It is a style that perhaps echoes his life, brought up surrounded by history in one of England's oldest homes, and then studying extensively in Interior and Spatial design, Furniture design, Textile design and Set Design at Chelsea college of Art, Central Saint Martins and the New York Film Academy. It was at Chelsea College of Art that he met fellow designer Andrea Fenner who later joined the firm bringing with her a wealth of commercial design experience (Gordon Ramsay, Harrods, Hauser and Wirth).

Upon graduation he started working with the film director Roland Emmerich, known for blockbusters such as Independence Day and Day after Tomorrow. He has worked with him now for over 18 years on his numerous homes across the globe, film projects, yachts, restaurants, bars and cinemas. He has also worked with other high profile Hollywood figures such as studio mogul Mark Gordon, film producer Dyson Lovell, film director Franco Zeffirelli, and Oscar winning actress Lee Grant. It is through his background in the film world, that he has built a team of scenic artists whom he has worked with for 20 years who have worked on films such as the Da Vinci Code and Star Wars. He explains the wonder of utilising artists from the film business, is that there is no such thing as can't, anything is possible and it is always to the highest quality.

His work has been published internationally in Taschen publications, Architectural Digest, New York Times and Boat International and the majority of the major UK design publications and newspapers. His furniture and artworks have been exhibited internationally and pieces are owned by the V&A, and South Korean museum of contemporary art.

His work has also more recently reached a wider audience through his TV appearances on the Netflix show Amazing interiors, The Jonathan Ross Show, The Ecologist, and numerous other news, lifestyle and TV shows.

John Tealls childhood home Battle Abbey
built to commemorate the Battle of Hastings 1066



ABOUT



The
New York
Times

**GORDON
RAMSAY**

HAUSER & WIRTH

Harrods

V&A

NETFLIX ORIGINAL
AMAZING INTERIORS

TANNER KROLLE
LONDON

TASCHEN

AD
ARCHITECTURAL DIGEST

THE RED BAR





Top: Bar design based on Victorian microscopic slides of diatoms (the alga that produce 50% of the air we breathe). With real diatom dust sprinkled in to the lacquer.
Right: Armchair design with genuine communist street banners.
Bottom Left : Communist champagne bucket given by the French government to the Soviet government in 1930s.
Bottom Right: Sofa design in Iron, Steel and gilt sofa

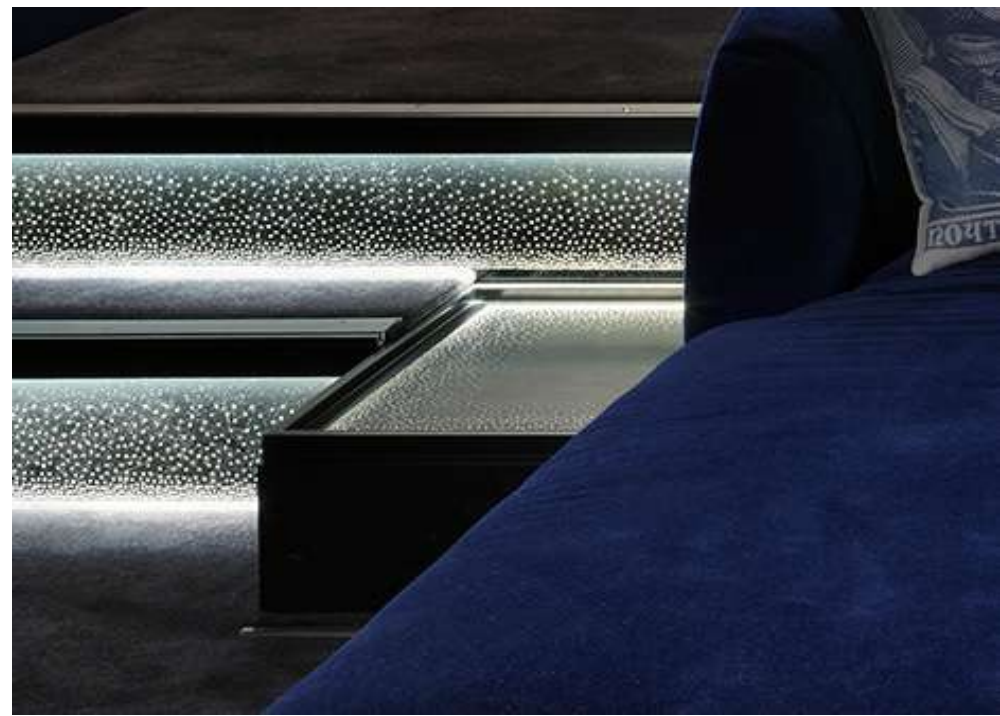
CINEMA





The mural artwork at the front (previous page) lifts to reveal the full screen. The seats at the front have the option to slide together to form a large bed area (following page). The central pendant is a 3d print of the surface of the moon, the light glimmering from behind it echoing that of an eclipse. The eggshell lacquered steps and coffee tables also echo the space like feel, and the secondary projector hidden in the mural at the rear allow the option of a real night sky on the ceiling.





⌘ SUPERYACHTS



Full interior and exterior refurbishment of a 1930s superyacht.





CABINS

EXTERIOR DINING



The chairs, table, and sofa were designed bespoke for the yacht, and the champagne bucket was acquired at an auction of items from a 1930s ocean liner.

ENGLISH
ECLECTIC



QUIRKS



A quintessential part of English style is its quirks. The English have long been celebrated for proudly owning their eccentricities. This component of English culture is drenched through Johns work.

Top left : A wax work of Pope John Paul 2 reads news of his death.

Top centre: Wine gum bottle with statue of the home owner inside

Top right : A statue highlighting the Ukrainian / Russia divide (notably a year before the war)

Right : Series of political coffee tables depicting from top to bottom :

Princess Diana Car Crash

Hugh Grant caught in flagrante with prostitute in car

JFK shooting

Man with shopping bag in front of tanks in Tiananmen Square

Abu Ghraib prison in Iraq

Below : A model steam train that crosses the restaurant on the hour

Centre top : A chess set featuring opposing sides of Iraq war

Centre bottom : Posh and Becks hoover and mop



Behind a giant North Korean mural of a giant hand crushing an American missile, lies an antique French porcelain sink. Overhead a Carlo Bugatti mirror is flanked by olympic torches from the Moscow Olympics. In the background the shower is dominated by a recreation of a mural photographed in a palace in Iraq depicting Saddam Hussein cradling a young child. On the shelf lies an antique bottle of Chloroform.

Below : A card set created from a photoshoot of Thai trans performers who were asked to prepare costumes of a 1930s style.





Bespoke design for headboard hand embroidered in gold thread

Bespoke wallpaper of hand drawn biro lines

Bespoke panelling with hand carved details



J FURNITURE DESIGNS



Johns furniture pieces are as unique as his interiors. Bespoke one-offs made for clients who savour the unique. Many are pieces of art in their own right and indeed have been exhibited in galleries and museums in the UK and around the world.

Left : Wardrobe constructed from inlaid Oak, Maple and Ash
Below : Oak sofa with hand carved bolsters





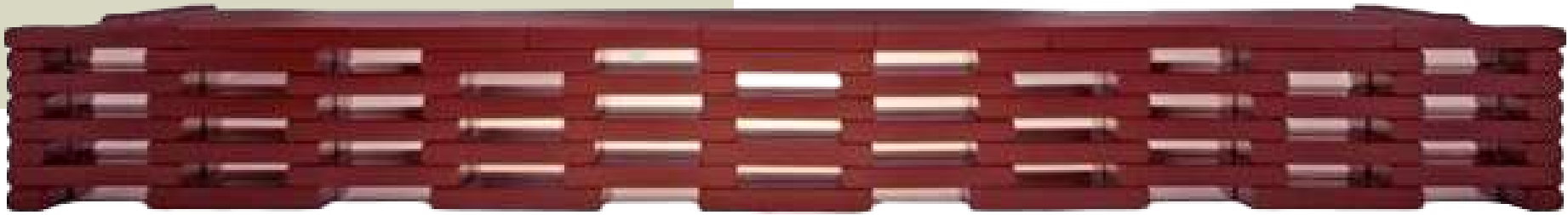
Top : Sideboard with designs based on ancient Aztec text

Bottom : Benches made in Bronze and perspex in the shape of Arabic letters spelling out the Arabic word for Infidels and a matching counterpart spelling Insurgents.

 WHITE HOUSE BIRD CAGE

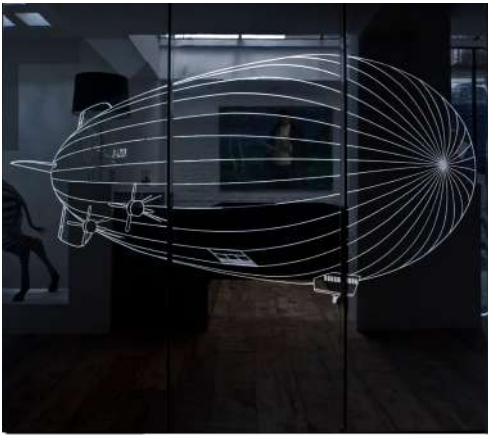


Taxidermy Doves of Peace trapped in The White House



Top : Sideboard made from Lacquered garden Jenga blocks and Mirror.

Bottom : A DVD Cabinet in Metal and Perspex



Above: Liberty Wall lights - The hand of the Statue of liberty reaches out of a 3d model of a vagina wearing a Cartier slave shackle, and set in to the iron beams of Trumps Mexican Border wall.

Top row left to right:
Exterior armchair for Maid Marian 2
Interior dining chair for Maid Marian 2
Louis XVI beheading chair (painting of his execution on an original chair)
Too Young to Die burnt table.



Row 2
Zeppelin kitchen cabinets
Olympic torch lamps
Perspex and Oak coffee table
Jenga sofa for William Yeoward



Row 3
White bedside cabinet
American Jock Clock
Library table

Row 4
Counting sheep clock
Medical part lamps
Stitched Cabinet

JH MURALS



Murals have become quite the trademark feature of Johns work, often filling entire walls. His team of scenic artists who he has worked with for 20 years assist to create these works in painstaking detail.



Chairman Mao overlooks the lounge of this Knightsbridge home in London



$$V = \frac{1}{2} \Delta P$$

$$\sum_{i=1}^n b_{ij} = 1$$
$$\sum_{j=1}^n b_{ij} = 1$$
$$1 \cdot d_{ij} - 1 \cdot d_{ji} = 0$$
$$1 \cdot d_{ij} + d_{ji} = d_{ij}$$

$$P_1(x) = \sum_{i=0}^n a_i x^i$$
$$P_2(x) = \sum_{i=0}^n b_i x^i$$
$$P_1(x) \cdot P_2(x) = \sum_{i=0}^{2n} c_i x^i$$

$$E = (M, \mathcal{A})$$
$$E = (M, \mathcal{A})$$
$$E = (M, \mathcal{A})$$



正规训练 反对侵略战争的进







Above - paintings of Francis Bacons studio.



Perhaps his best known piece is Choose Life - which consists of a Wham T-shirt painted immaculately on to an original Old Masters painting of The Crucifixion. Its completion a year before Banksys Crude Oil exhibition, which encompassed numerous humorous revisions of old masters ,led to false speculation that they may be one of the same. Below: The raft of the medusa is reinterpreted with the castaways taking photos with mobile phones.



Top: From the exhibition of Old Masters extras - a series of 70 paintings where small details and charactors were enlarged to take centre frame. Bottom : Tudor modesty from the Masters series

GRAFFITI WALLPAPER



Bespoke wallpaper. At first glance a conventional flock, but on closer inspection are something more.

The wallpaper made by Cole and Sons was then pasted up as graffiti in public toilets around London and photographed. The remaining wallpaper and photographs adorn the bedroom above.

The curtains are made from wedding dresses bought from ebay

The lampshades are based on Ancient Greek erotic murals from Pompeii

COMMERCIAL



Upcoming new project in Mayfair, London for Tanner Krolle.







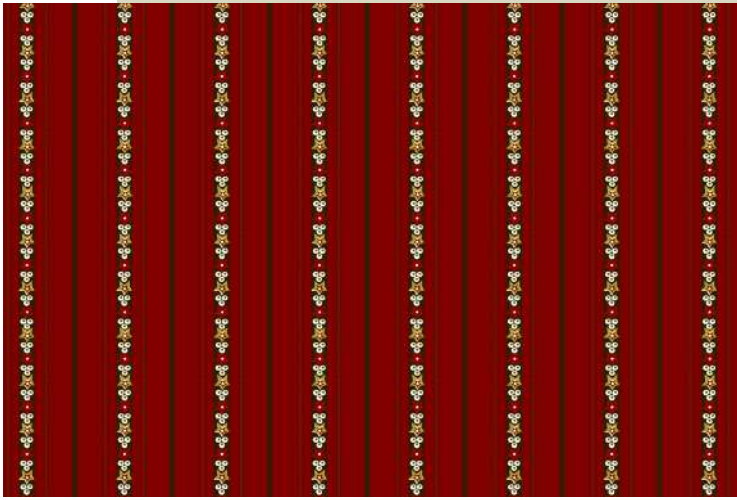
BOUTIQUE HOTELS

Cotswolds, England



Projects in the grounds of
Blenheim Palace and in the
historic listed town of Burford.

TEXTILE DESIGN



Top: Soviet inspired stripe
Middle : Fabrics for Tanner Krolle
Bottom from left : Comet Rug,
Constructivist Rug, Werkstatte Rug,
Golden triangles rug, Covid19 cushion,
Kardashian cushion.



BATHROOMS







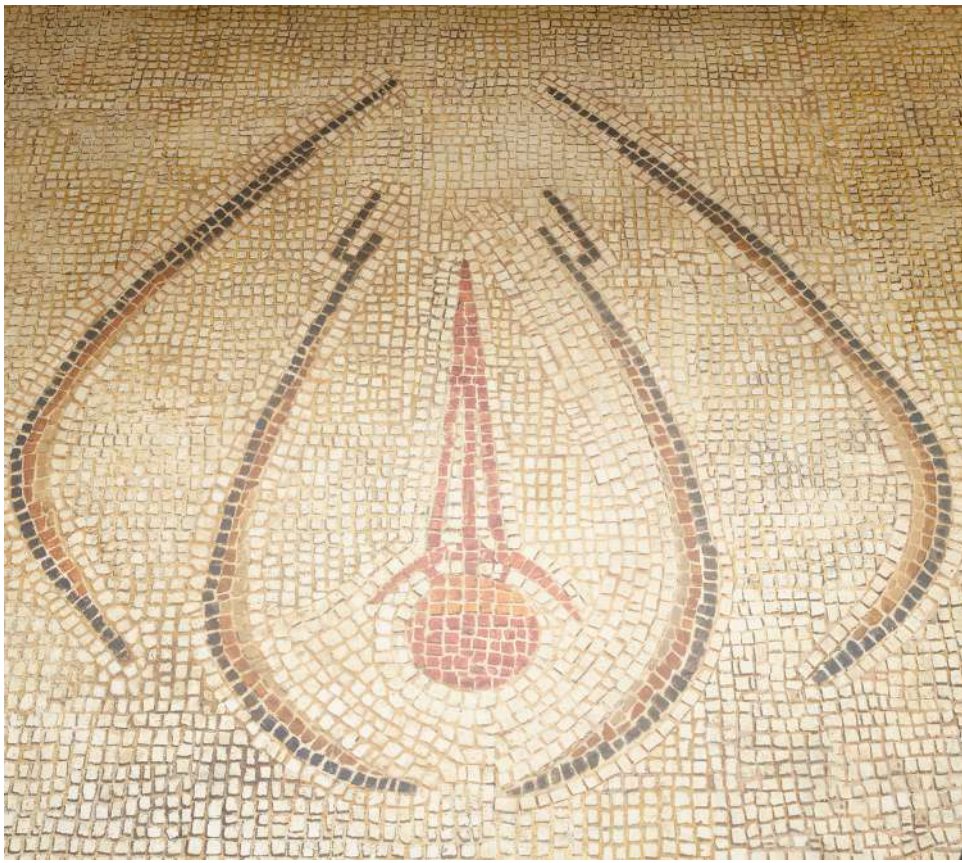
The 1930s mural blends effortlessly with the wood and copper materials of the bathroom and bedroom beyond. The wood was all hand-artworked to an antique finish. The carvings were designed bespoke for the project.







Left: The walls and lampshades are upholstered in the same silk as Buckingham Palace's throne room. The fittings are gold leafed by hand, and the gilt console is an original converted to a sink. An antique Spanish crown has been converted to a shower head. The shower itself is the same damask hand painted and varnished, and the shower curtain is a waterproof golden velvet. The mosaic gold tiles to the left are original 17th-century originals from Westlands.



MOSAICS
FROM ORGY - ROOM
IN POMPEII





LIFTING ROOFLIGHT

The rooflight in this residential home lifts pneumatically to convert the dining area in to an external courtyard in good weather



BLACKOUT ROOFLIGHT



Rooflights installed for maximum light in the day and blackout glass for night time.



ARTIFICIAL ROOFLIGHT

The potential basement in this home in Knightsbridge had been turned down on appeal by the previous owners.

However John achieved getting a full 4m deep basement approved as well as two new roof terraces, extension and private gardens access in this listed property.

The award winning rooflight was the first artificial sunlight installation of its kind in a residential property.





EXTERIOR SPACES

Tropical planting provides a screen of privacy for the pool area below.







SMALL SPACES

On





DESIGN AND BUILD

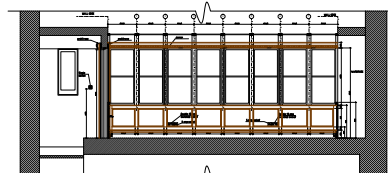
A full design and build service using a trusted team of builders he has been using for two decades. With extensive experience of both residential and commercial projects, encompassing basements, extensions, attic conversions, and full refurbishments. Teams are available in both London and Los Angeles, though also happy to work with clients own builders if they prefer.



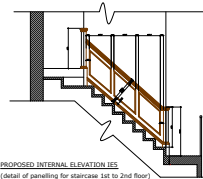


0 3 9 15 24 36ft

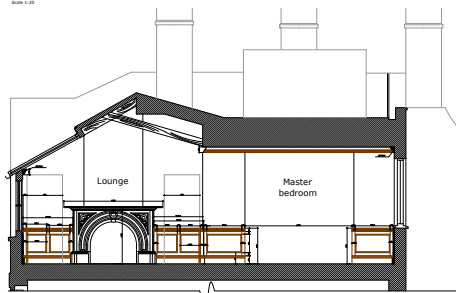
A2 AW 1108 02
1102 APPROX WET
LIVE PROPOSED
LARGE INTERNAL
SLOPE



PROPOSED SECOND FLOOR SECTION J11



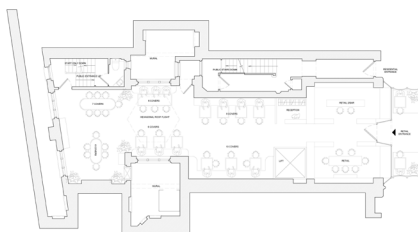
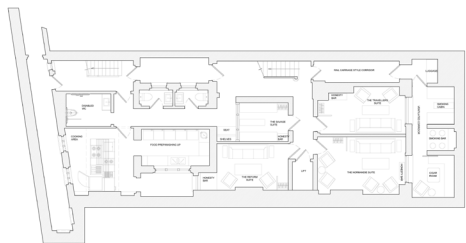
PROPOSED INTERNAL ELEVATION J12
(Detail of panelling for staircase 1st to 2nd floor)



PROPOSED SECOND FLOOR SECTION J12



A2 PRE 0216 John Teal
1102 APPROX WET
LIVE PROPOSED
LARGE INTERNAL
SLOPE



1102 AW 1108 02
1102 APPROX WET
LIVE PROPOSED
LARGE INTERNAL
SLOPE

PLANNING

Extensive experience in planning applications.

Good relationships and knowledge of Westminster, RBKC and Los Angeles City planning departments.

100% success rate with basement applications.

Well known for achieving the impossible, including legal appeals against the Wellcome Trust, and RBKC.

Specialist heritage expertise for listed planning consents. Both in UK and internationally.



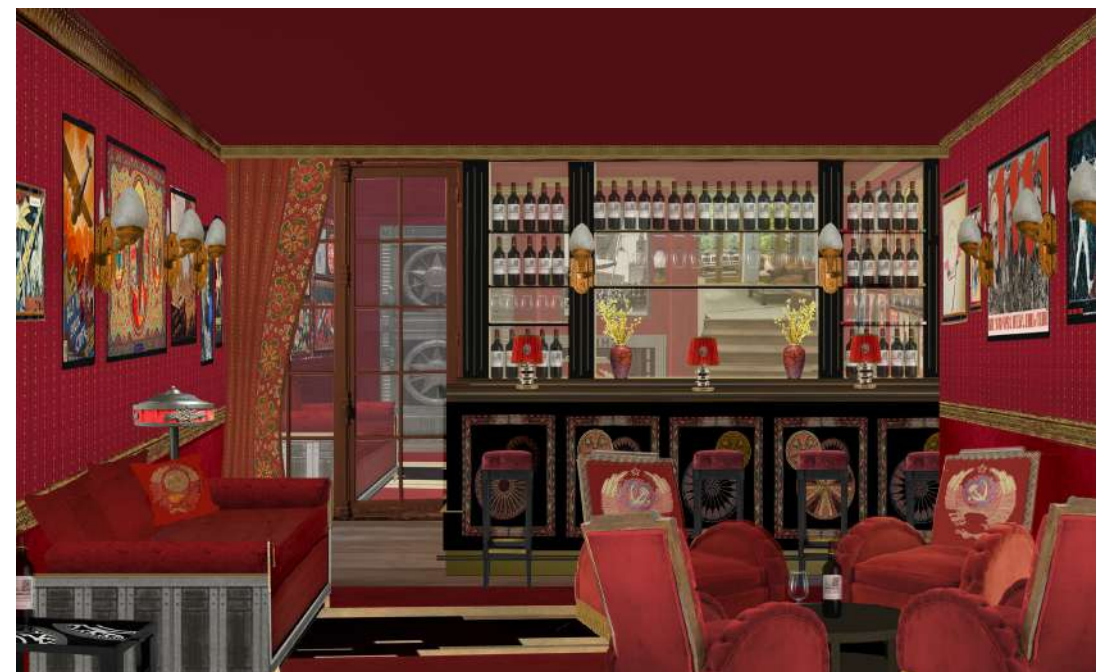
City of Westminster



LOS ANGELES CITY PLANNING

VISUALISATIONS





TASCHEN



AD ARCHITECTURAL DIGEST



REFIT



BOAT



Maid Marian 2: On board the classic

The New York Times



The Telegraph



marie claire Maison



The Guardian



House Beautiful



DAILY Mirror



Richmond & Twickenham TIMES



ROUGH LUXE DESIGN



NETFLIX ORIGINAL AMAZING INTERIORS



THE Ecologist



itv NEWS



THE JONATHAN ROSS SHOW



PRESS

Livingetc



THE INDEPENDENT



stella



THE Sun



AD RUSSIA



THE SPACES



London Evening Standard



THE HOLLYWOOD REPORTER



YACHT style



The Telegraph



The A-List of Travel LUXURY TRAVEL MAGAZINE



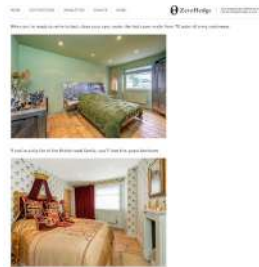
living design MAGAZINE



LUXURY LONDON



ZeroHedge



PRESS